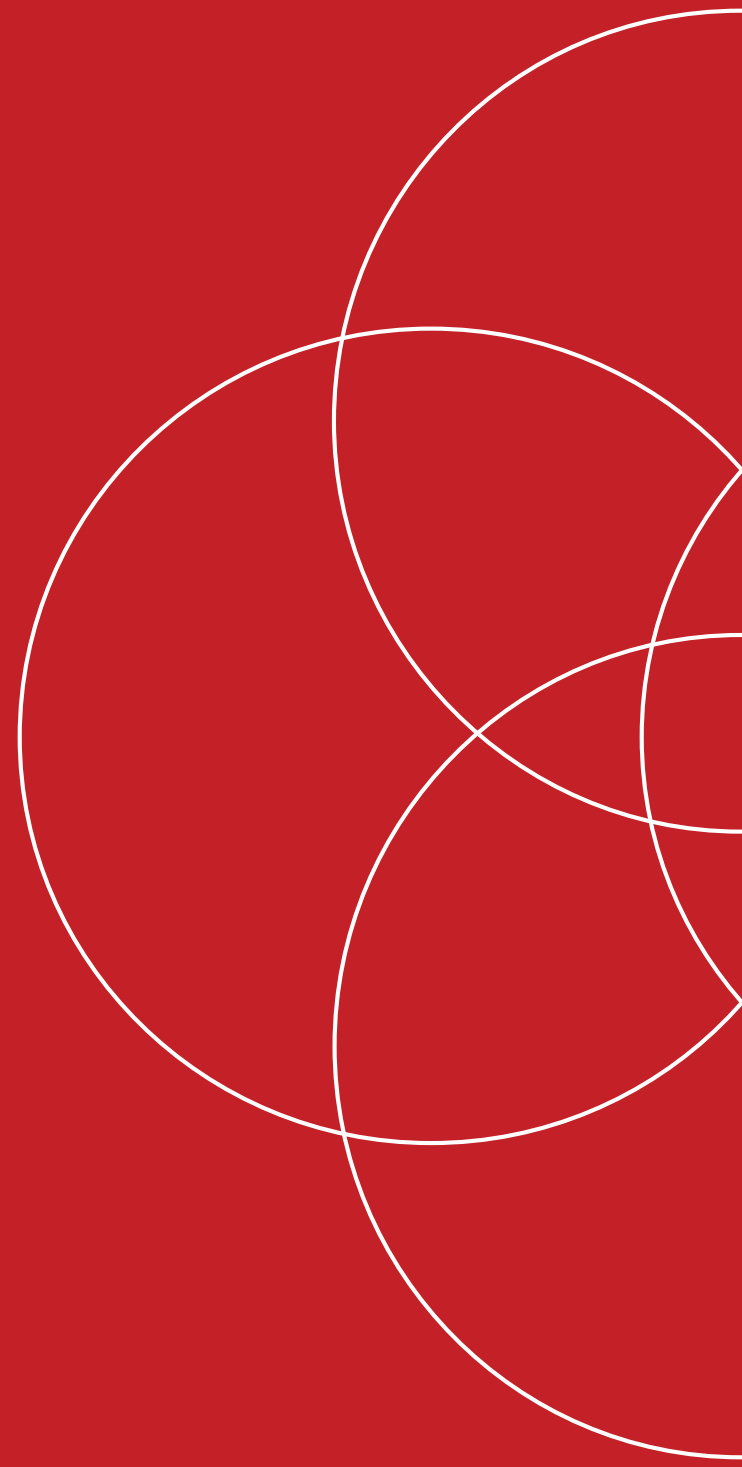
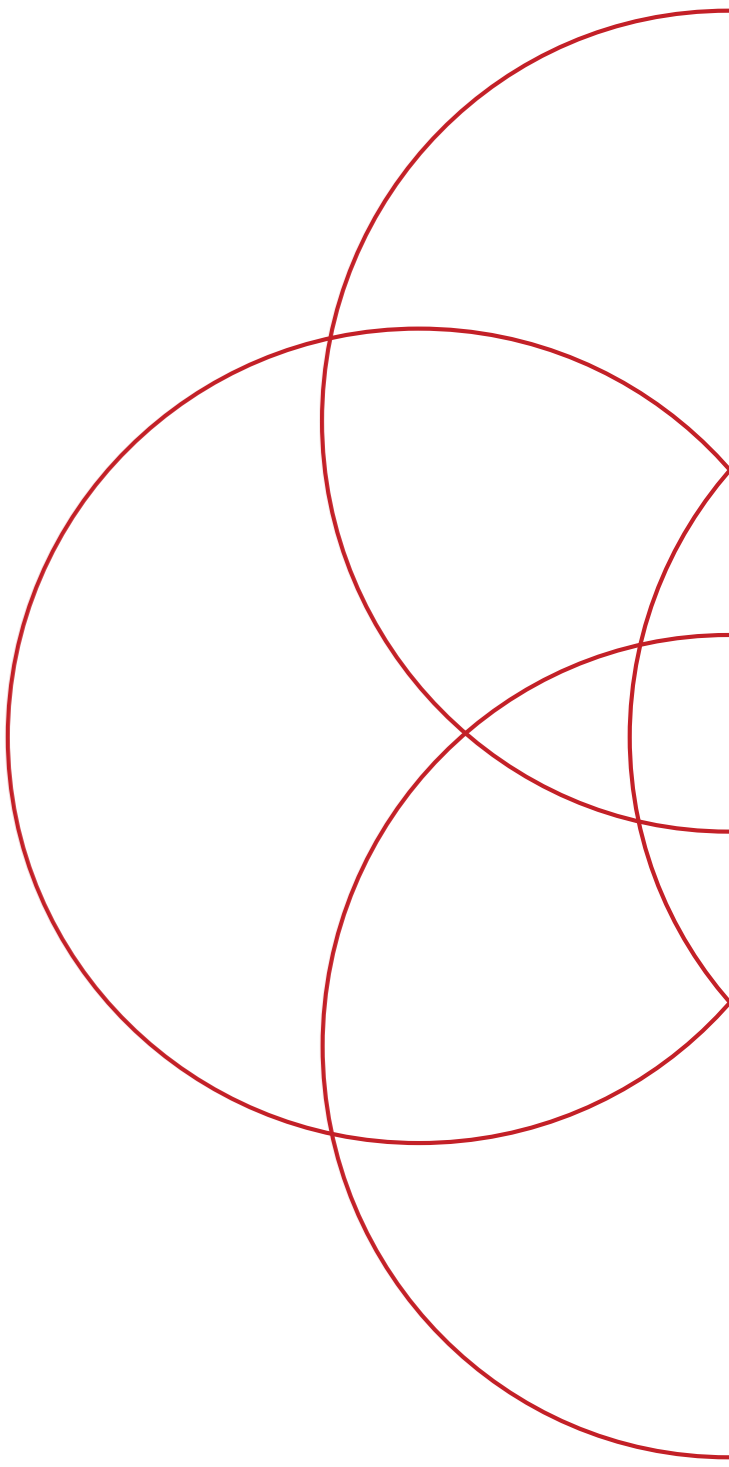


Enjoy
Elite G2

RIADCO 
workplace harmony



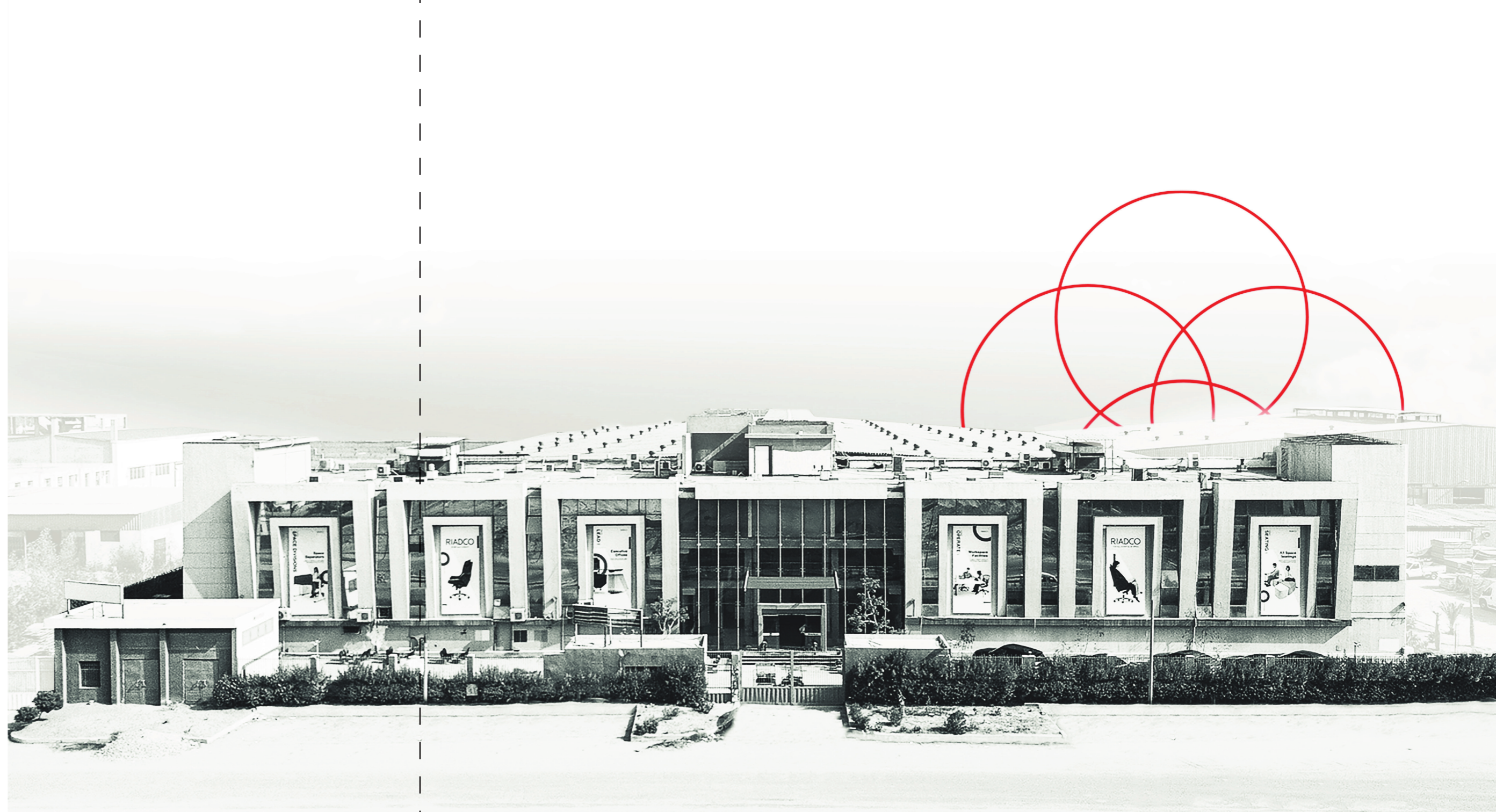


ABOUT RIADCO

We are a pioneering company that has made a difference in the industry since 1981. We have found innovative solutions for organizations' latent and future needs by studying work environments and embracing new ways of working to create long-lasting solutions that bring people, space, and information together. Riadco is known for its revolutionary concepts, blending architectural power, mechanical engineering delicacy, and insightful business sense to reimagine possibilities for domestic and international projects.

OUR PRODUCTION

The limitless manufacturing capabilities begin with a workforce of 500 skilled professionals operating 3 organized and efficient plants, spanning over 50,000 sqm, dedicated to wood panel, metalwork, and upholstery; ensuring high production rates to meet the diverse needs of our clients. Riadco has a vast network of showrooms across Egypt while distributing globally, guaranteeing utmost dedication to delivering exceptional craftsmanship, innovative designs, and quality.





Enjoy Elite G2

Enjoy Elite G2

The Generation 2 Enjoy Elite model features unique autoflex zones for back and lumbar support; an ingeniously simple single lever which operates the three most frequently used chair functions (seat height, seat slide and back tilt); and an additional lever on the left to control the new forward seat tilt function.

The integrated lumbar support now includes tension control for customised support, and the armrests have been updated with an ergonomic tilt-up feature, ideal for mobile device or gaming users.





Enjoy Elite G2 FEATURES

FEATURES

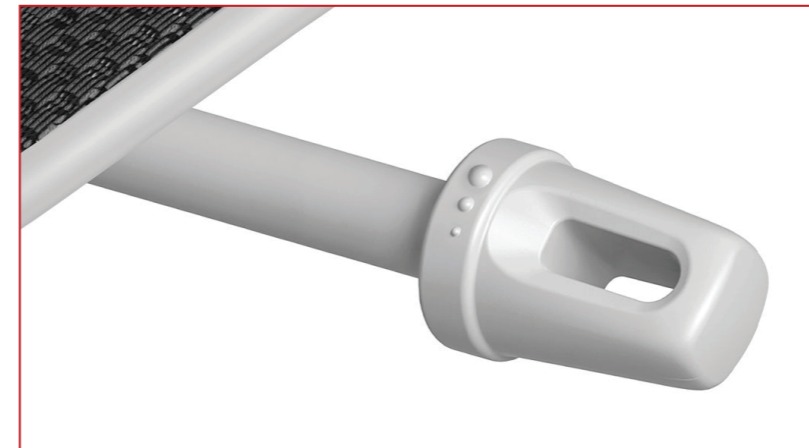
- Synchro mechanism
- Generous wide backrest
- Right single lever for:
 - seat height
 - seat slide (50 mm)
 - lockable back tilt
- Left lever for forward seat tilt
- Recline tension control
- Integrated lumbar support with tension control
- 5D adjustable armrests:
 - height, width, depth, angle and armpad tilt
- Enhanced waterfall front seat
- Polished aluminium base with 60 mm castors

OPTIONS

- Black or grey frame
- Adjustable headrest
- Fold-out footrest
- Choice of coloured mesh upholstery



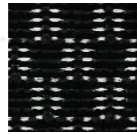




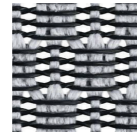


Enjoy Elite G2 FINISHES

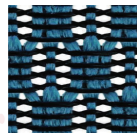
T MESH



BLACK STANDARD
T-168-B1



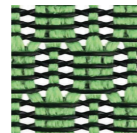
LIGHT GREY
T-168-B2



COBALT
T-168-B4



PINK
T-168-B5

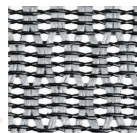


GREEN
T-168-B6

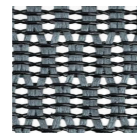


SCARLET
T-168-B3

W MESH



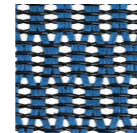
WHITE
W09-24



GREY
W09-24



BLACK
W09-01

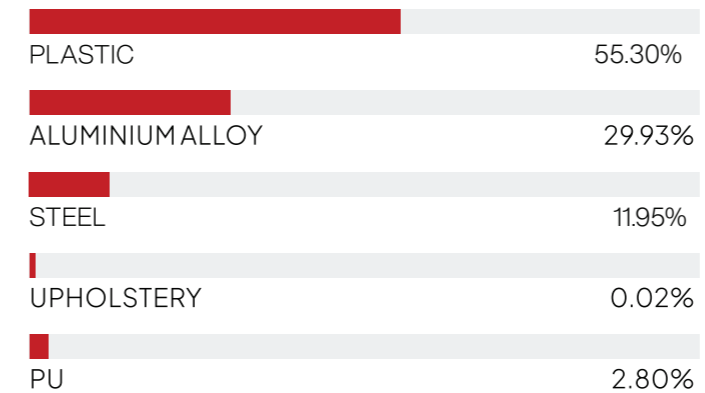


BLUE
W09-01

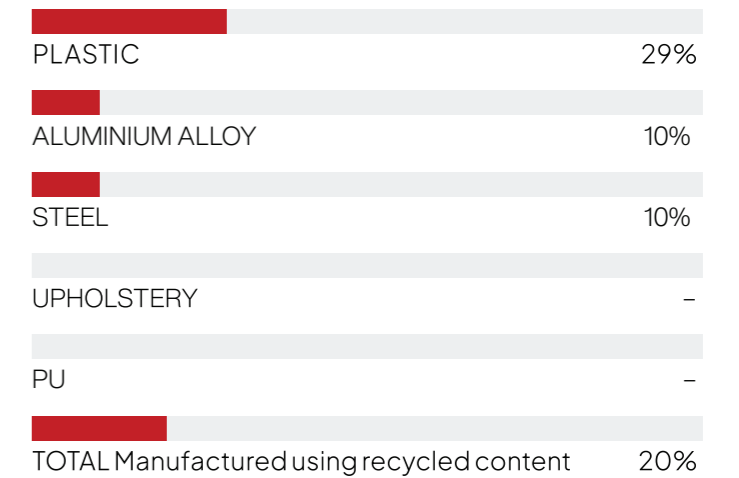
RECYCLABILITY



MATERIAL ANALYSIS



RECYCLED CONTENT





CERTIFICATION

- EN1335-1
- EN1335-2
- ANSI/BIFMA X5.1-2017
- GREENGUARD GOLD

Greenguard Certification Standards have established performance-based standards to define products and processes with low chemical and particle emissions for use indoors.





Riadco is certified

ISO 14001

ISO 9001

ISO 45001

2, 3 block 13021
1st industrial zone,
Obour city, Cairo, Egypt.

+20 2 4481 0534
www.riadco.com
info@riadco.com



Riadco is certified

ISO 14001

ISO 9001

ISO 45001

2, 3 block 13021 1st industrial zone,

Obour city, Cairo, Egypt

+20 2 4481 0534

www.riadco.com

info@riadco.com

Copyright 2024 Riadco. Cairo - Egypt. All rights reserved. Confidential material of relevant economic value, property of Riadco. Reproduction and/or disclosure, even partial, to third parties is prohibited without specific written authorisation from Riadco management. Riadco reserves the rights at all time to apply modifications for the functional or qualitative improvement of its products. Texts and drawings present in this catalogue have a divulgative purpose.